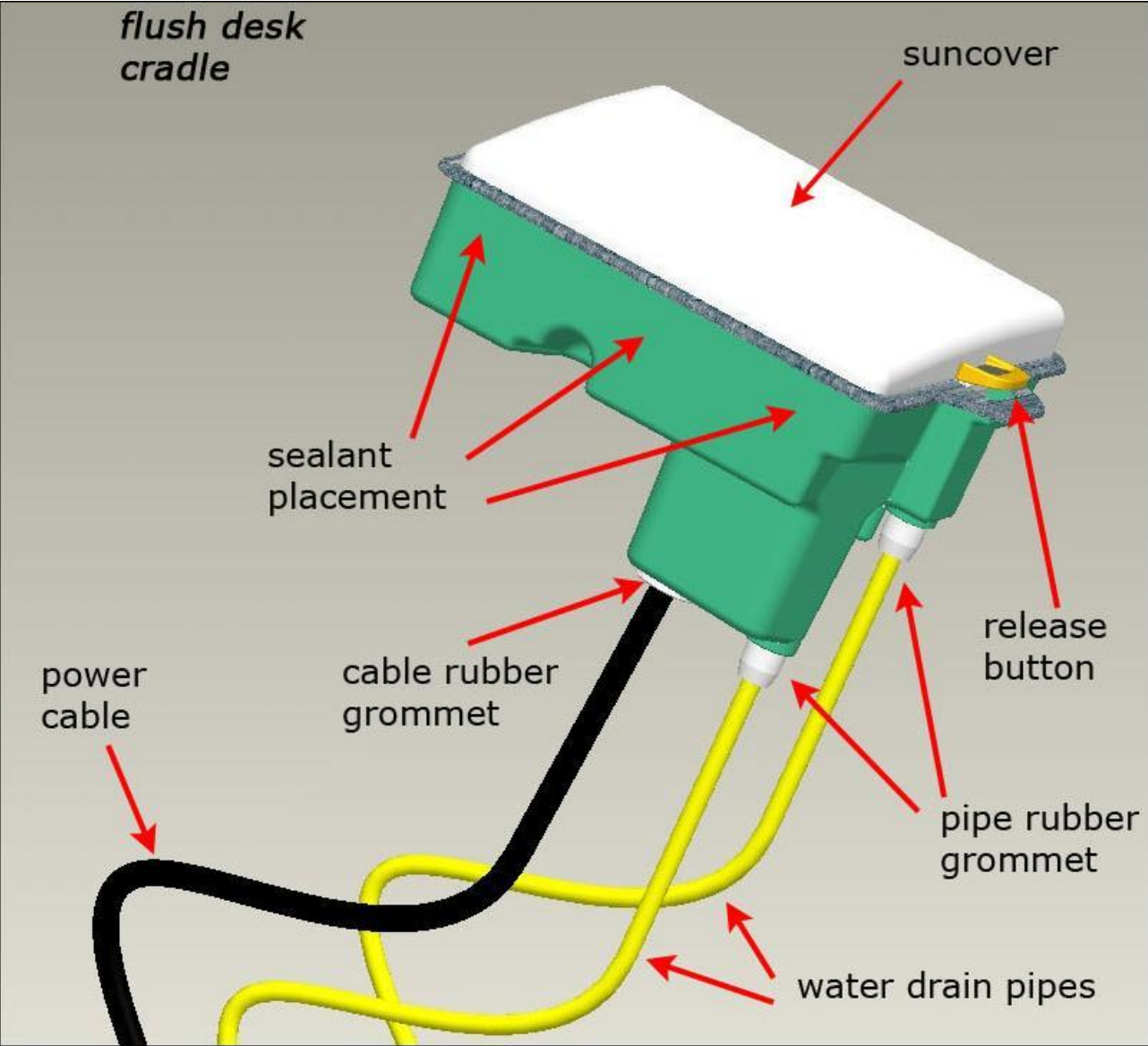


Installation Guide of the Flush Desk Cradle

1.Short guide



2. Guide

This document includes the assembly instructions for the Geonav 5 Touring desk installation.

The use of the cradle allows the flush desk mounting of the GEONAV 5 Touring so to reduce at minimum size the overall dimension.

3. Dimensions

The maximum overall dimensions of the flush desk cradle are:

width 157mm

height 180mm

depth 150mm

The details for the depth size can be found on the drilling template included in the packaging.

Note: all the above-stated dimensions are referred to the maximum extensions of the instrument.

4. Content of the packaging

Please make sure that the packaging is intact. The content includes:

1. **Cradle assembly**, with uncouple lever inserted and stuck with stainless-steel screw.
2. **Dedicated suncover**, with an adhesive label bearing the instructions for the plotter removal from the cradle
3. A plastic envelope containing:
 - **Pipe rubber grommet** for water drain tubes (3 pieces, 2 plus 1 in reserve);
 - **Cable rubber grommet with hole diameter 5.9mm** for power supply cable / fish finder (product code P1017970) (2 pieces, 1+1 in reserve);
 - **Cable rubber grommet with hole diameter 4,2mm** for power supply and data cable (product code P1015860) (2 pieces, 1+1 in reserve);
 - **Adapter** for the blockage of the plotter in the cradle.
4. **Plastic tube** of 6mm external diameter, thickness 1mm, for pneumatic application (2 mt).
5. **Drilling template** for panel mounting (1 piece).

5. Tools

Before installing the flush desk cradle on the instrument panel, make sure to have at your disposal the following tools:

- Electric drill;
- Jigsaw;
- Sealant (pref. acetic silicone);
- File;
- Cutter;
- Screwdriver;
- Adhesive tape;
- Cable clips.

6. Drilling of the instrument panel

Locate the drilling template and line it in the correct position on the instrument panel where the plotter has to be installed, fixing it with the adhesive tape.

Drill a hole in a chosen point along the drilling template, and insert the blade of the jigsaw.

Cut along the drilling template, then polish the cut profile by means of a suited file.

Remove the instrument panel wastes, the drilling template scraps and clean the work area.

7. Preparation and gluing

Before continuing the installation, the cable and the water drain tubes have to be inserted on the flush desk cradle.

Open the envelope containing the rubber grommet and proceed as described underneath depending on the cable model utilized:

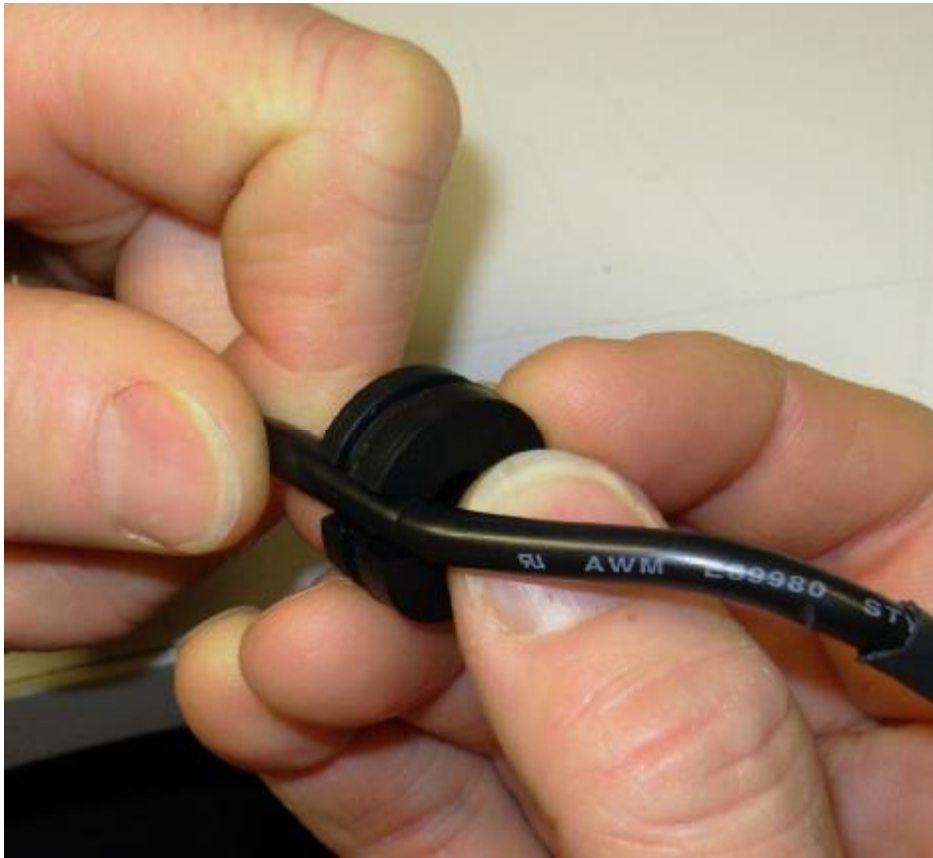
- ü In case of use the power supply and data cable (product code P1015860, no fish finder), take one cable rubber grommet with inner diameter 4.2 mm and insert the cable.

- ü Slide the cable rubber grommet along the power cable for 160 mm, as illustrated underneath.



- ü In case of use the power and fish finder cable (product code P1017970), use the cable rubber grommet with hole diameter 5.9mm and make a radial cut on it in order to run the cable through the rubber. See photos below.





Slide the cable rubber grommet along the power cable for 160 mm, as illustrated underneath.



- ü In order to guarantee the water pollution, insert 2 pipe rubber grommets at the extremities of the plastic tube of 6 mm diameter, as illustrated in the photos below.



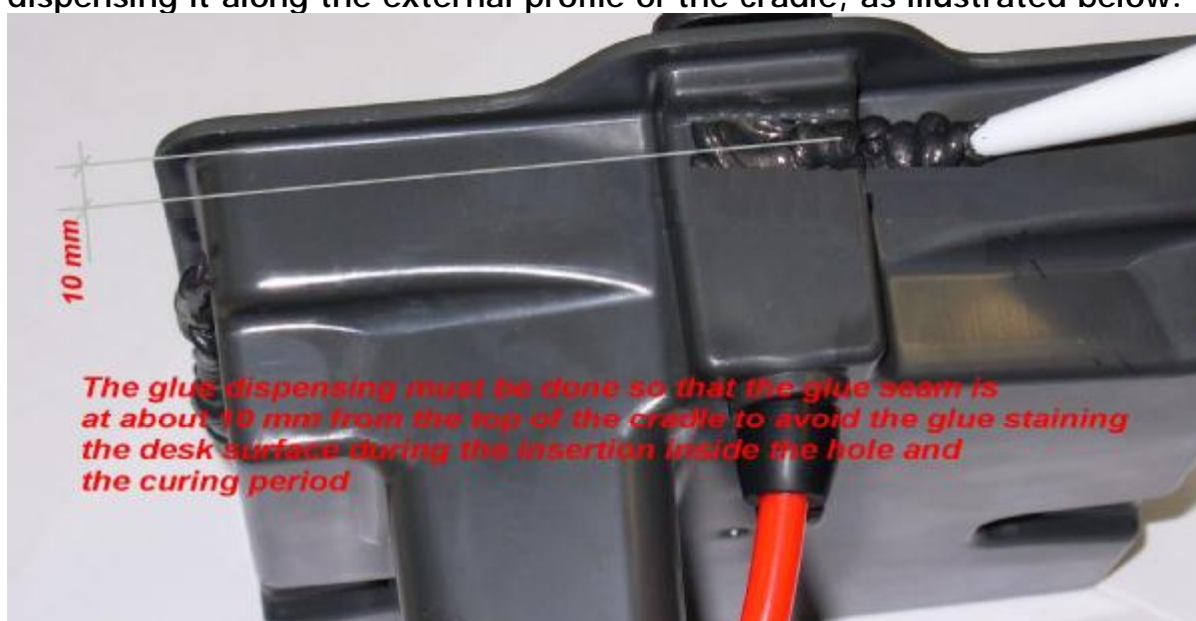
- ü Make sure that the tube is inserted up to the upper extremity of the rubber grommet.
- ü Cut the tube at the required length, then insert the rubbers in the proper holes, with the help of a screwdriver if required (See photos below).



- ü If required, seal up the rubber grommet with acetic silicone (especially on instrument panels where the access is not so easy).
- ü Block the water drain tubes and the power supply cable in a single strand using cable clips if necessary (See below).



- ü Proceed to cradle gluing with a sealant (preferably acetic silicone), apply dispensing it along the external profile of the cradle, as illustrated below.



- ü During the centering of the cradle make sure that the sealant do not fill the holes for the suncover insertion. If required, carefully clean the area.
- ü Suitably position the water drain tubes and cable.
- ü Wait for the correct drying of the sealant (respecting the curing time indicated in the instructions of the used product), then proceed with the plotter installation.

8. Plotter installation

Insert the adapter included in the plastic envelope in the proper slot on the rear cover of the plotter (See below).



Plug in the power supply cable on the back of the plotter observing the direction as indicated by the positioning arrow. Bend the cable in order to correctly fit it in the slot under the cradle (avoid forcing) (See photo).



Line up the upper side of the plotter with the upper rest of the cradle.



Rotate the plotter in order to block it (see photo below).



Insert the suncover as illustrated, rotating up to insert it in its seat.

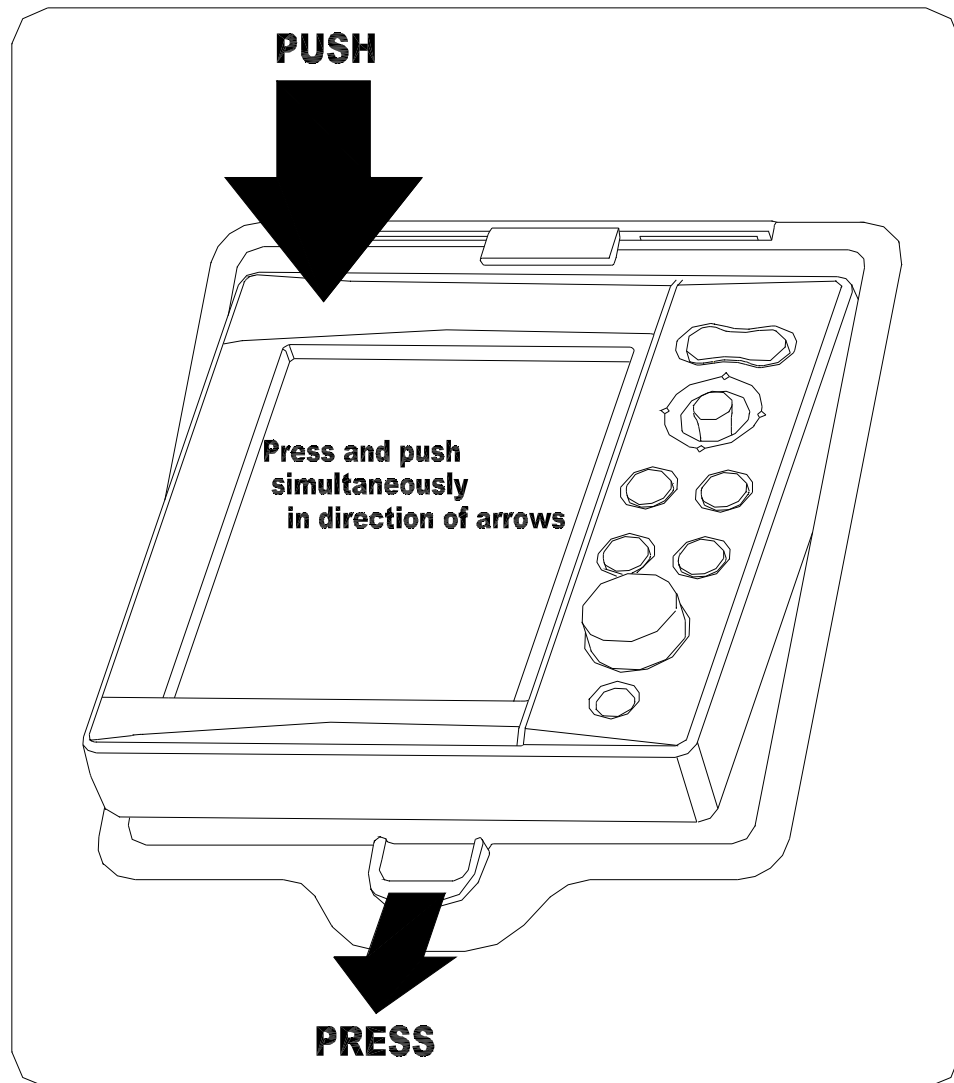


9. Suncover and plotter removal

A light pressure on the uncouple lever may unlock the suncover.

Extract the suncover after removing it from the hooks on the upper side of the cradle.

The plotter may be unblocked by pushing more actively the uncouple lever and simultaneously pressing one of the upper corners of the unit (See illustration underneath).



Remove the power cable and replace the suncover.

10. Index

1. Short guide	1
2. Guide	2
3. Dimensions	2
4. Content of the packaging	2
5. Tools	3
6. Drilling of the instrument panel.....	3
7. Preparation and gluing.....	3
8. Plotter installation	8
9. Suncover and plotter removal.....	10
10. Index	11